

How work *flows.*

DocuSphere® Advanced Function Modules: Auto Voucher and Pass-Through-Billing

DocuSphere® Workflow functionality has been extended with application specific modules for Service Billing and Accounts Payable. The Pass-Through-Billing module (PTB) streamlines billing and dramatically speeds revenue recognition. The Auto Voucher module (AVN) fully automates vendor invoice vouchering, further reducing AP transactional costs. Both provide great improvements in productivity, reduced human error rates and ultimately improve the bottom line, increasing return on investment for DocuSphere users in ERP environments.



The IIS DocuSphere suite offers business process improvement functionality typically not available through traditional ERP software, including robust workflow, document management, imaging and content management capabilities. These capabilities integrate seamlessly with existing ERP software solutions to reduce business process cycle time, reduce manual intervention and provide more financial visibility for senior management.

The Auto Voucher and Pass-Through-Billing modules strengthen the DocuSphere suite tremendously, making it even easier for customers in a greater number of industries to implement tangible cost-savings and revenue enhancement solutions in Accounts Payable, Accounts Receivable and Billing areas.

The Auto Voucher module for DocuSphere allows ERP users to create new vendor invoice batches automatically, minimizing manual data entry of the required voucher information. All of the required invoice data is automatically verified with existing accounting records in the ERP system to ensure accuracy, which reduces the number of errors. Batches are created effortlessly, eliminating the number of



Workflow

Document Management

ERP Integration

How work flows.

human touches to an invoice and ultimately increasing productivity and reducing transactional costs.

The screenshot displays the Oracle Voucher Journal Review interface. On the left, a table lists vouchers with columns for Voucher Type, Voucher Number, Voucher Company, Supplier Name, GL Date, Gross Amount, and Foreign Amount. The table shows three vouchers from different suppliers, with a total gross amount of 2,524.87. On the right, a 'Batch Summary Document' window shows details for Batch ID 7727, including invoice numbers, voucher numbers, and amounts. Below this, an 'Image Viewer' window displays a scanned invoice from Sierra Tile Supply, Inc. to Kline Bowel, Inc.

Voucher Type	Voucher Number	Voucher Company	Supplier Name	GL Date	Gross Amount	Foreign Amount
PV	3284	00001	Sierra Tile Supply, Inc.	12/20/2007	12.95	
PV	3285	00001	Lamb Excavation, Inc.	12/20/2007	1,041.00	
PV	3286	00001	Young Block Co. Inc.	12/20/2007	1,470.92	
Total					2,524.87	



Pass-Through-Billing is a DocuSphere revenue-enhancement module that reduces the costly time between receipt of a vendor invoice and creation of the customer invoice. The module is especially relevant for industries that use Service Billing, such as construction and property management, where companies are reimbursed directly for project or property costs.

The Pass-Through-Billing module allows invoices and other expense documents to be easily organized in concert with the ERP system. The information can be printed, delivered to a customer on a CD-ROM or made available via the Web. By eliminating a "paper chase," the user can recognize revenue faster by preparing customer invoices much quicker than before while eliminating lost expenses and other delays.

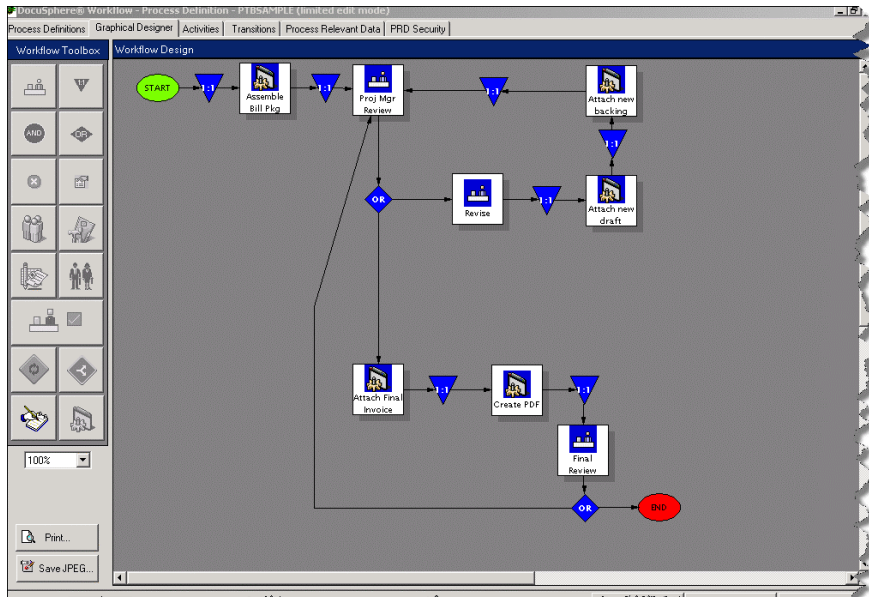


Workflow

Document Management

ERP Integration

How work flows.



The screenshot shows the 'DocuSphere® Workflow - Attachments' web interface. It includes a navigation menu, a 'Work Item Information' table, and an 'Attachments' table. The 'Attachments' table lists items with 'View', 'Revise', and 'Edit' links. To the right, an 'Image Viewer & Notes' window displays a 'Billing Invoice' with various details and a signature area.

Process	Activity	PID	AID	Doc Type	PS Doc Type	Business Unit	Customer Number
PTBSAMPLE	Final Review	1692	5388	BINV		6100	12

Index Definition	Ref Pages	Reference Data
<input type="checkbox"/>	View Revise Edit	Billing Invoice 113
<input type="checkbox"/>	View Revise Edit	Invoice 6107
<input type="checkbox"/>	View Revise Edit	Invoice 6107 PO 4845

DocuSphere AVN and PTB modules are fully integrated activities within the DocuSphere Workflow product, a standards-based, thin-client-enabled system that automates



Workflow

Document Management

ERP Integration

How work *flows*.

enterprise-wide business processes across all application systems and platforms. DocuSphere Workflow uses flexible, graphical management tools that easily create, maintain and secure workflow patterns.

DocuSphere Workflow runs on Windows 2000 and 2003 systems, employing MS SQL and Oracle databases, and was developed using Microsoft's state-of-the-art .NET framework. Additional modules and APIs are available if additional ERP application or workflow integration is required.

The full IIS solution also includes DocuSphere Content Manager, a complete Microsoft Windows-based, thin-client-enabled document imaging and archiving system for viewing, managing and distributing all forms of electronic documents across internal networks and the web; and DocuSphere ERP Integration, certified for Oracle JD Edwards and SAP ERP application software.



About Image Integration Systems (IIS)

IIS was formed in 1993 to develop, implement and support document management solutions for business process improvement in high-volume transaction environments. IIS professionals have extensive experience with ERP business processing environments for applications such as accounts payable, sales order processing, billing and shipping. IIS DocuSphere products are certified for the leading ERP software providers, including Oracle (JD Edwards) and SAP. For more information, visit www.DocuSphere.com.



Workflow

Document Management

ERP Integration