

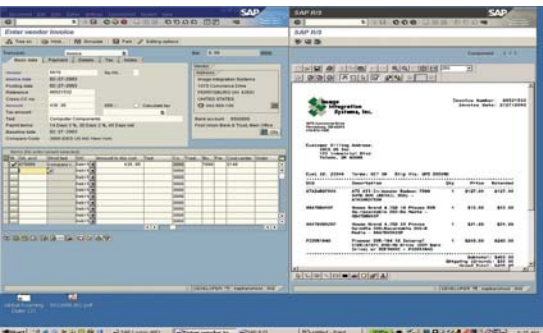
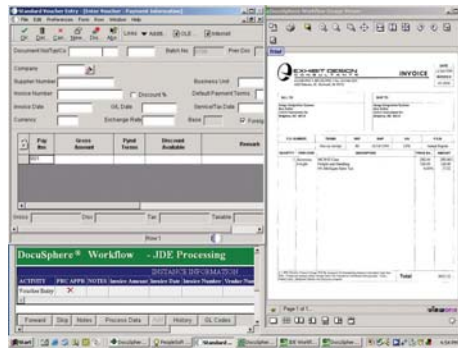
Linking ERP systems with DocuSphere® Workflow and Content Manager, ERP Integration modules create synergy, improving business processes at every point. This forms the information pipelines necessary to capture and carry all relevant data and documents, enabling greater process standardization and automation across the enterprise and beyond.

These modules image-enable ERP applications so they remain the single point of access for business users. Related documents and images can be accessed by performing one simple, extra “drill-down” step. ERP process-relevant data may also be easily retrieved from DocuSphere Workflow and Content Manager, eliminating the challenges of learning new ERP interfaces for many business users.

Benefits for business. When you add DocuSphere Workflow to the mix, documents can be automatically forwarded to processors and indexed as part of any transaction. This “key from image” function prevents documents from being lost in the shuffle, while providing for accurate and reliable data retrieval down the line. Better yet, DocuSphere can significantly reduce, and sometimes completely eliminate, manual data entry for certain types of ERP transactions.

Designed in accordance with ERP vendor specifications, DocuSphere ERP Integration products deliver complementary functionality through familiar ERP screens. This design also means upgrades are quickly and easily applied.

Modules are also available for integration to applications on the IBM iSeries (AS/400) and other platforms.



DocuSphere ERP Integration modules create synergy, improving business processes at every point.

Every business can benefit from increases in process automation and productivity. DocuSphere ERP Integration gives you the resources to make it possible.

- Validate new data against existing ERP records
- Extract process-relevant data from the ERP system
- Automatically index process documents with ERP transactional data
- Submit data directly to the ERP, through an ERP-edited interface

Workflow

Document Management

ERP Integration

Proven process improvement resources. As evaluated and validated by leading ERP vendors, Oracle and SAP, DocuSphere ERP modules feature interfaces which operate seamlessly with existing applications. To achieve certification, Image Integration Systems submitted the DocuSphere ERP Integration modules to a series of rigorous and comprehensive tests. As the results showed, DocuSphere was proven to be reliable and compatible with all applications and prescribed data structures. Consequently, it maintains the integrity of all ERP transactions.

Certified for use with Oracle's World and Enterprise One ERP products (formerly from J.D. Edwards and PeopleSoft), DocuSphere ERP Integration is enabled through business functions imbedded in the ERP applications. This provides ERP users access to the entire set of DocuSphere imaging and workflow tools.

Moreover, Image Integration Systems' DocuSphere ArchiveLink – an integration module which uses SAP's defined interface for attaching and archiving documents – has achieved certification for SAP R/3 utilization. Further, through the interface, DocuSphere Workflow can trigger activities automatically within the SAP workflow system.

DocuSphere ERP Integration modules run on Windows 2000 and 2003 systems, employing MS SQL and Oracle databases, and were developed using Microsoft's state-of-the-art .NET framework. APIs are available for additional ERP application or workflow integration.

About Image Integration Systems. Established in 1993, Image Integration Systems (IIS) provides comprehensive solutions for business process improvement. We offer a complete line of DocuSphere software and hardware products, along with the consulting, installation and support expertise necessary to maximize return on investment. Our professionals are skilled in ERP applications such as accounts payable, sales order processing, billing and shipping. A certified member of the Oracle and SAP partner programs, we've assisted midsize to large multinational customers in a wide variety of industries, in locations across North America and around the world.



 **DOCUSPHERE System Requirements**

Server: Windows 2000 or 2003 Server family; minimum 2 GHz CPU and 1 GB RAM
(Recommended configuration will depend on user and transactional volumes)

Supported Databases: Microsoft SQL Server 7.0+ and Oracle 8i+
(Database can reside on the same or another network server with DocuSphere)

Web Server: Microsoft Internet Information Services

Clients: Windows 98+, IE 5.5+; minimum 1 GHz CPU and 128 MB RAM
(+ and higher versions)

Workflow

Document Management

ERP Integration